



# AFFORDABLE GERMAN BUILT TENSILE TESTERS UNIVERSAL TESTING MACHINES

Including powerful & easy to use software

**Universal Materials Testing Machines**

**2 Year Warranty**

**Aluminium & Stainless Steel Construction**

# TENSILE TESTERS – GERMAN BUILT



Tensile Testers / Universal Testing Machines which include powerful and easy to use Software.

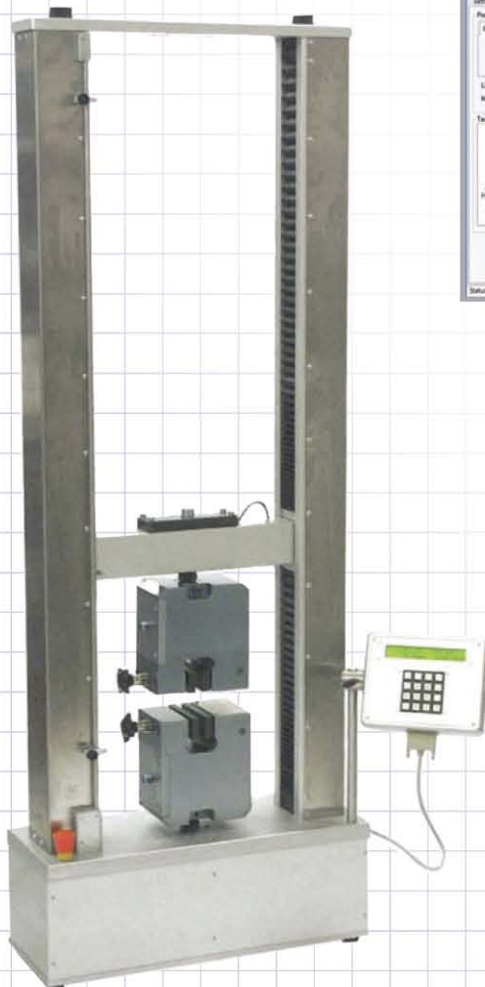
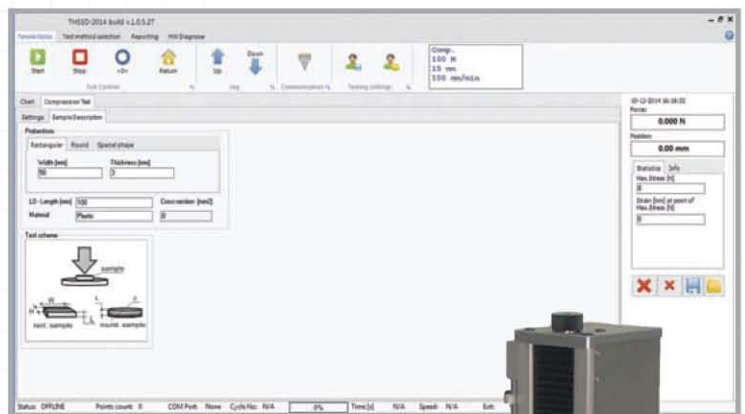
For use in research & development and quality control applications.

Built in Germany to the highest standards, at an affordable price.

Impressive range of instruments from compact space saving machines with a 3 kN capacity up to large 100 kN machines built for the most demanding testing.

These universal machines can be used standalone or with a computer. All measuring data can be transferred to a PC using a USB connection.

The machines come complete with one load cell (capacity specified at time of order) and software for Windows.



- ▶ Tensile
- ▶ Compression
- ▶ Bend
- ▶ Shear
- ▶ Torque
- ▶ Friction (COF)
- ▶ Fatigue



# UNIVERSAL TESTING MACHINES

## Key Features

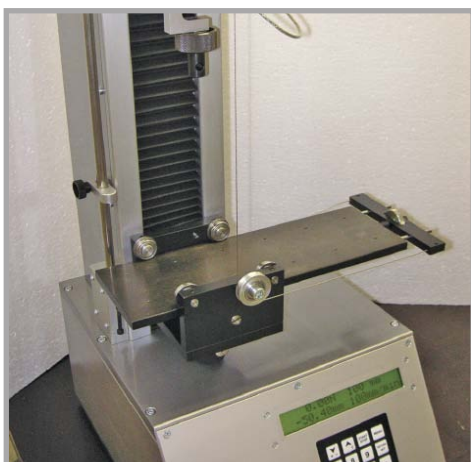
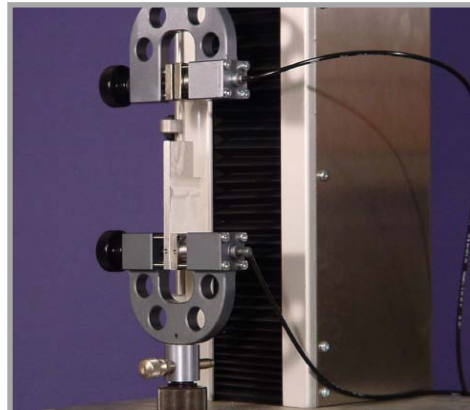
- ▶ Large real time numeric displays
- ▶ Live Load, Load Rate, Peak Load, Live Stress, Stress Rate,
- ▶ Peak Stress, Live
- ▶ Position, Position Rate, Peak Position, Live Strain, Strain Rate, and Peak Strain
- ▶ Extensometer control / analysis
- ▶ Modulus calculations
- ▶ Monotonic, cyclic and segmented test profiles
- ▶ Plot Real-time test data via printer
- ▶ Comprehensive analysis & calculations
- ▶ Multiple specimen geometries and dimensions
- ▶ Export reports / results to PDF, Excel or as text file.
- ▶ 2 year warranty

## High Accuracy

- ▶ Grade 0.5 load cells to all international standards including EN10002-2, EN7500-1, DIN51221, ASTM E4, AFNOR A03-501, JIS B7721. Grade 0.5
- ▶ Position resolution better than 0.01mm displayed (0.001 mm internal)
- ▶ External Extensometer (optional)
- ▶ Guaranteed Resolution with a standard load cell  $\pm 100\,000$  parts 50 Hz per second. Higher speed / resolution possible as an option.

## Options

- ▶ Dynamic Test - System for Endurance tests
- ▶ Temperature / Environmental Chambers
- ▶ Additional Crosshead travel or width between columns
- ▶ Over 3000 different grips and fixtures available
- ▶ Extensometers
- ▶ Load Cells 2N to 100 kN
- ▶ Installation & Training
- ▶ Finance / lease options available (subject to successful application)



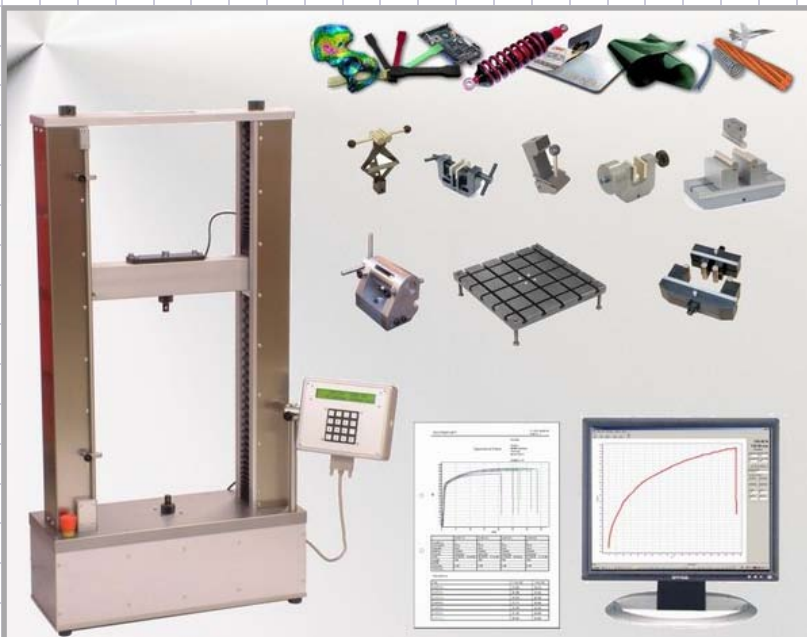
AML's Universal Testing Machine range is extensive but not exhaustive; we can manufacture non-standard machines or software to suite just about any test.

*Challenge us with your testing problems or requirements, our experienced engineers will help find and if required design and build you a solution.*

## Specifications

	Z3		Z5		Z10		Z20		Z50		Z100	
Max Force [kN]	3		5		10		20		50		100	
Max speed [mm/Min]	700		700		600		1600		1600		1000	
min speed [mm/Min]	1		1		1		0.03		0.03		0.02	
Smallest free distance [mm]	66		66		200		209		209		228	
Adapter Size [mm]	15.9		15.9		15.9		31.8		31.8		40/12	
Motor [Watt]	50		90		170		800		1600		2400	
Voltage [-V]	220/110		220/110		220/110		380		380		380	
Motor type	DC		DC		DC		AC-Servo		AC-Servo		AC-Servo	
Manufacture	Maxon		Maxon		Maxon		Stöber		Stöber		Stöber	
Crosshead												
Extension [mm]	500	1200	500	1200	700	1200	700	1200	700	1200	700	1200
Weight [kg]	36	37	55	56	80	105	235	260	245	270	380	420
Dimensions [mm]	1036	1677	1036	1677	1226	1726	1317	1837	1317	1837	1450	2050
	390	390	390	390	640	640	1071	1071	1071	1071	1090	1090
	300	300	300	300	240	240	433	433	433	433	590	590
Packing												
Dimensions [mm]	1150	1800	1150	1800	1315	1916	1900	1900	1900	1900	1600	1600
	500	500	500	500	740	740	1200	1200	1200	1200	1200	1200
	400	400	400	400	400	400	800	800	800	800	800	800

Wider versions available to order.



**Calibration, Service and Repair for most makes and models of Tensile Tester**