

SNOL 1100°C Laboratory Furnaces

The Fibre Muffle 1100 series from AML Instruments are precision laboratory electric muffle furnaces, with a counter balanced lift-up door, for use up to 1100°C.

Designed for materials testing, heat treatment, ceramic samples firing and ashing (models with chimney). Used in laboratories, educational institutions, workshops and in industry for thermal processing.

The chambers are made of high thermal efficiency vacuum-formed ceramic fibre, with heating elements embedded in the sides, top and bottom of the chamber, providing heat from 4 directions. A hard-wearing ceramic tile protects the fibre base from wear.

An Omron E5CC digital PID temperature controller is fitted as standard and provides precise temperature control with good stability and minimal over-shoot. Other options are available (see page 4).

A chimney, fitted to the rear of the furnace, is recommended for processes producing fumes or giving off carbon (e.g. ashing or burn-off operations). A chimney is included as standard on larger models (see the following pages).

Independent over-temperature protection is available and is recommended if the furnace will be run while unattended; to meet Health and Safety requirements. Adjustable over-temperature protection (OTP2) can be set to a temperature to protect load placed in the chamber, in addition to the furnace itself. Adjustable over-temperature protection is included as standard on larger models (see the following pages).

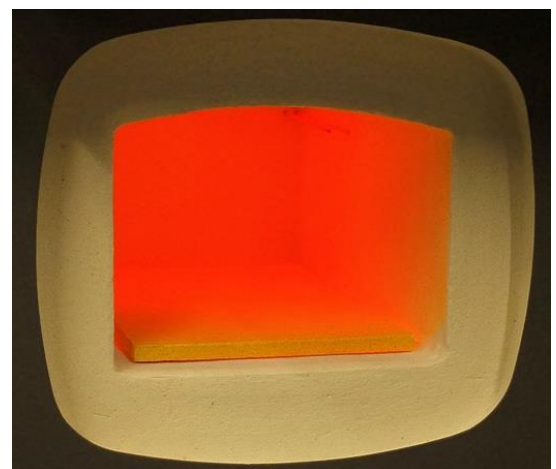
Our furnaces are available with optional UKAS (ISO 17025) calibration of the temperature control system, and we also offer multi-point thermal surveys of the chamber volume.

AML Instruments offers models customised to meet AMS 2750F (aerospace & automotive heat treatment specification), complete with UKAS (ISO 17025) calibration and thermal survey meeting NADCAP requirements. For customisation to this specification or others please contact us.

A metal tray is optionally available for each model and is recommended to protect the furnace from spills or debris produced by some processes.



- *Lift-up door for efficient use of workspace and greater safety.*
- *Good stability and uniformity.*
- *Fast heating and cooling time due to low thermal mass construction.*
- *Low power consumption for reduced running costs and energy savings.*



SNOL /1100 Fibre Muffle series

(Relative model sizes between images are not exact.)

Smaller Models



3/1100



8.2/1100



13/1100

Larger Models



22/1100



39/1100



These units are manufactured in the EU by SnoTherm (Umega Group, AB) to AML Instruments Ltd's specification. Final manufacturing, testing, localisation, customisations, addition of options and after-sale service are performed in the UK by AML Instruments Ltd. AML was established in 1979 and has offered the SNOL range since 2008.



UK Prices Exclude VAT and Delivery and are correct at the time of writing. Specification and price subject to change without notice. All trademarks acknowledged. Appearance may vary from images shown.

Smaller Models

Model <i>AML Stock Code</i>	Capacity <i>(WxDxH in mm)</i>	External Size <i>(WxDxH in mm)</i>	Voltage / Power / Connector	Price
SNOL 3/1100 LHM01 <i>FCESNOL3/1100LHM01</i>	3 Litres 125 x 200 x 115	340 x 470 x 430	230Vac / 1.8kW / UK 13A style Plug	£1,080
SNOL 8.2/1100 LHM01 <i>FCESNOL8/1100LHM01</i>	8.2 Litres 200 x 300 x 133	440 x 620 x 510	230Vac / 1.8kW / UK 13A style Plug	£1,240
SNOL 13/1100 LHM01 <i>FCESNOL13/1100LHM01</i>	13 Litres 225 x 360 x 180	500 x 700 x 550	230Vac / 1.8kW / UK 13A style Plug	£1,580

Note: At least 1/10th of the chamber dimensions should be left unused on each side. External Size not including optional chimney. If used below 200°C these units (especially larger models) may over-shoot the set temperature, depending on load. Weights exclude options and transportation packaging. WxDxH = Width (Left-right) x Depth (Front-back) x Height (Top-bottom).

Main Options	Default	Optional	
Chimney :	None	Natural Convection +£140	Fan-Assisted +£320
Over-temperature Protection :	None	OTP 1 (Non-adjustable) +£210	OTP 2 (Adjustable) +£287

Additional options and further details are listed on the following pages.

Larger Models

Model <i>AML Stock Code</i>	Capacity <i>(WxDxH in mm)</i>	External Size <i>(WxDxH in mm)</i>	Voltage / Power / Connector	Price
SNOL 22/1100 LHM01 <i>FCESNOL22/1100LHM01</i>	22 Litres 275 x 500 x 155	600 x 890 x 610	230Vac / 3kW / Blue Round 16A Plug	£2,340
SNOL 39/1100 LHM01 <i>FCESNOL39/1100LHM01</i>	39 Litres 315 x 515 x 225	650 x 900 x 740	400Vac (3P+N) / 6kW Red Round 16A Plug	£2,940

Note: At least 1/10th of the chamber dimensions should be left unused on each side. External Size not including optional chimney. If used below 200°C these units (especially larger models) may over-shoot the set temperature, depending on load. Weights exclude options and transportation packaging. WxDxH = Width (Left-right) x Depth (Front-back) x Height (Top-bottom).

Main Options	Fitted as Standard	Optional	
Chimney :	Natural Convection	Fan-Assisted +£185	None -£20
Over-temperature Protection :	OTP 2 (Adjustable)	None -£80	

Additional options and further details are listed on the following pages.

Further Specification

	3/1100	8.2/1100	13/1100	22/1100	39/1100
Heating Time : (To 1100°C, no load, no options. Approx.)	45min	50min	50min	55min	55min
Height with Door Open :	650mm	800mm	900mm	1000mm	1200mm
Base Unit Weight :	18kg	28kg	38kg	58kg	75kg
Packaged Transport Weight :	27kg	36kg	54kg	83kg	118kg

Cooling Rate Example: SNOL 13/1100 without chimney

Time, Hours	0.0	0.5	1.0	1.5	2.0	2.5	3.0	3.5	4.0	4.5	5.0
Temp., °C	1100	840	680	540	480	400	340	290	250	210	180

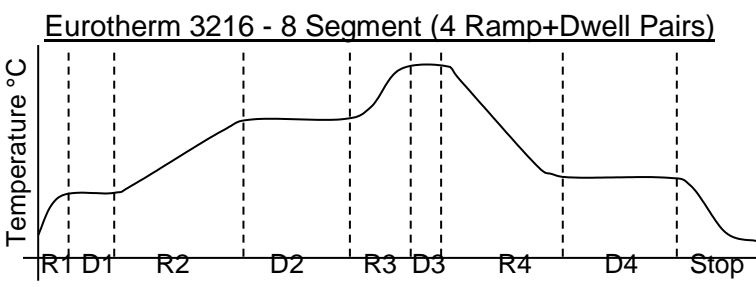
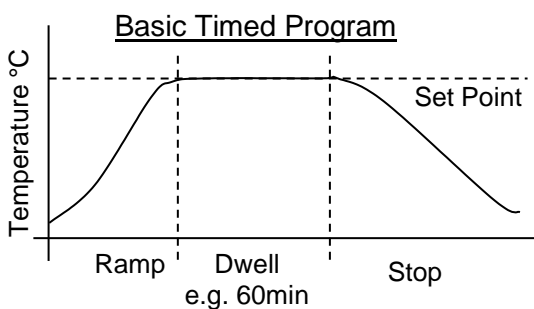
The default E5CC controller can have a ramp rate set at a specific rate per hour, which applies to both heating and cooling. By request (when ordering) the settings can be unlinked, so the cooling ramp rate can be set differently from the heating rate. Note that the control of cooling is only to limit the rate at which it falls, it cannot increase the speed beyond its natural rate.

UK Prices Exclude VAT and Delivery and are correct at the time of writing. Specification and price subject to change without notice. All trademarks acknowledged. Appearance may vary from images shown.

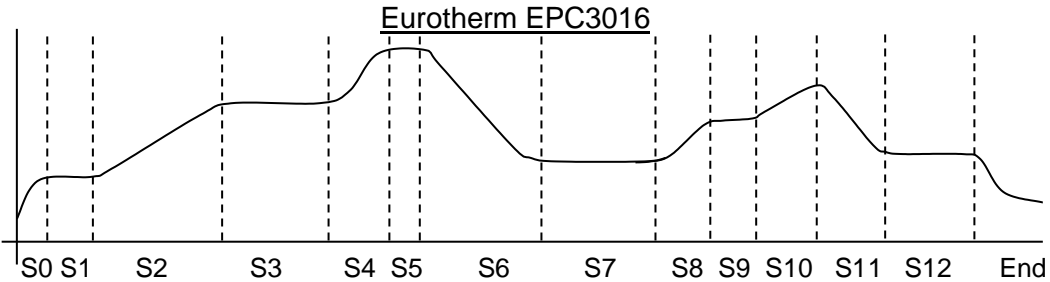
Temperature Controller Options for Furnaces

<p align="center">Omron E5CC</p>	<p align="center">Eurotherm 3216</p>
	
<p align="center">1/16th DIN Size Run/Stop Modes Settable Heating Ramp Rate Basic Timed Program: Ramp, Dwell, Stop.</p>	<p align="center">1/16th DIN Size Run/Stop (Auto/Off) Modes Settable Heating Ramp Rate Basic Timed Program: Ramp, Dwell, Stop.</p>
<p align="center">Fitted as standard.</p>	<p align="center">Optional at extra cost. +£275</p>
<p align="center">Eurotherm 3216 Programmer, 1 Program, 8 Segments Optional at extra cost. +£380</p>	<p align="center">Eurotherm EPC3016 Programmer, 10 Program, 24 Segments each, RJ45 Ethernet PC Network Port Optional* at extra cost. +£735</p>
	
<p align="center">1/16th DIN Size (~48x48mm). Run/Stop (Auto/Off) Modes. Settable Heating Ramp Rate. 8 Segment Timed Program: 4 Ramp+Dwell pairs, Stop.</p>	<p align="center">1/16th DIN Size (~48x48mm). Run/Stop (Auto/Off) Modes. Settable Heating Ramp Rate. 10 Timed Programs with 24 Segments each (Ramp, Dwell, etc).</p>
<p align="center">Eurotherm 3216 Programmer, 5 Program, 8 Segments each Optional at extra cost. +£505</p>	<p align="center">Connection to a laptop or PC network via Ethernet RJ45 port on front panel. Includes PC software for easier creation, editing and backup of timed programs. <i>(*Only available when OTP also is fitted.)</i></p>

Other instruments can be fitted to order, to give features such as timed programs with more segments, audible alarms, remote communications and data recording. Please contact us for details.



Examples of the timed programs:



UK Prices Exclude VAT and Delivery and are correct at the time of writing. Specification and price subject to change without notice. All trademarks acknowledged. Appearance may vary from images shown.

Over-temperature Protection Options for Furnaces

By default AML offers the smaller models without over-temperature protection as a product to compete with equivalent models from other suppliers. Adjustable over-temperature protection (OTP2) is included as standard on larger models (see page 3). Provided the furnace is not left unattended, this is acceptable. However the Health and Safety Directive mandates that where units are left unattended they must have over-temperature protection fitted. (*Prices on Page 2.*)

OTP 1	An internally fitted self-resetting temperature limit controller, which users cannot access or change the temperature setting. Protects the furnace from exceeding its maximum safe temperature.
OTP 2	A digital temperature limit controller mounted in the front panel. Displays its temperature reading and can be set by the user to protect their load from exceeding their desired temperature. If the furnace temperature exceeds the temperature set on the over-temperature protection controller, the furnace will be prevented from heating until the user resets the over-temperature protection controller, by pressing a button.



Optional OTP 2 and standard Temperature Controller. 'ALM' flashes on the display when over temperature.

Chimney

Highly recommend for any process giving off vapour, fumes or carbon. Fitted at the rear. They can also provide occasional access for thermocouples* etc. (*Prices on Page 2.*)

Natural Convection Chimney - Air is drawn through chamber, out through a ceramic tube and up the stainless-steel chimney casing by natural convection.

Fan-assisted Chimney - A greater amount of air is drawn through chamber, out through a ceramic tube and up the stainless-steel chimney casing. Air is forced up the chimney casing by a fan blower at the base, increasing the air draw.

A suitable fume extraction system or fume cupboard is also required. The cross section of the chimney casing is 80x60mm. If using a small extraction hood or tube directly above the chimney, we recommend a few inches of space are left to allow a mixture of ambient air and chimney air to be drawing into the extractor. Also consider some fumes may escape around the door or if it is opened while hot. If the chimney is no longer needed, it can be blocked with suitable high temperature insulation wool (a small amount is supplied).



Cable Entry Port +£185

A 15mm inside diameter ceramic tube at the rear into the chamber for putting in thermocouples* or other sensor cables.

Suitable high temperature rated material is provided to block the Entry Port. Flanges and objects passing through the Entry Port may get hot and conduct heat outside the chamber. Excessive thermal loading or insufficient insulation in the entry port can have a negative effect on thermal uniformity in the chamber. Ceramic dimensions may vary slightly.

**Thermocouples and metal objects must be suitably earthed and should be fitted by a suitably qualified person.*

UK Prices Exclude VAT and Delivery and are correct at the time of writing. Specification and price subject to change without notice. All trademarks acknowledged. Appearance may vary from images shown.

Accessible Thermocouple Connections +£69

We can fit accessible thermocouple connections (at the rear) to save time with regular calibrations.

Consisting of inline miniature size thermocouple connectors. For use by a suitably qualified person, allowing direct electrical injection onto the instrument(s) sensor input. Units with OTP 2 will have connections for both systems when this option is ordered.

Calibration of Furnace Systems

UKAS calibration of instrument(s) and thermocouple(s), as a system, at your choice of temperature(s) between 300 and 1100°C. A calibration certificate is issued reporting the tested system's measurement at each temperature. This calibration will be carried out in our laboratory prior to fitting into the furnace. The typical lead-time is 4 - 10 working days. Fast turn-around may be available at additional cost. We can also provide on-site calibration and thermal surveys at additional cost.

<u>No. of Specified Temperature Points</u>	<u>Control System Only</u>	<u>Control & OTP 2 Systems</u>
1	£180	£220
2	£220	£260
3	£255	£295
4	£285	£325
5	£310	£350

7 Day Timer +£290

A timer can be fitted to the turn on the controller at a specific time. The controller will then run at its last setting. Featuring: Daily and weekly program, Manual override, Fully automatic daylight saving time.

Trays

Metal trays are available for all models, manufactured from stainless steel with a maximum temperature of 1100°C.

Note that these trays are liable to thermal distortion and degradation under the maximum temperature and so are considered a consumable item. Lower heating rates and temperatures will result in less distortion and slower aging.



<u>For Model</u>	<u>Dimensions (WxDxH)</u>	<u>AML Stock Code</u>	<u>Price</u>
SNOL 3/1100 LHM01	105 x 180 x 10 mm	FCESNOL3/1100TRAY	£40
SNOL 8.2/1100 LHM01	180 x 280 x 10 mm	FCESNOL8/1100TRAY	£60
SNOL 13/1100 LHM01	210 x 330 x 10 mm	FCESNOL13/1100TRAY	£70
SNOL 22/1100 LHM01	250 x 450 x 10 mm	FCESNOL22/1100TRAY	£80
SNOL 39/1100 LHM01	290 x 470 x 10 mm	FCESNOL39/1100TRAY	£90

UK Prices Exclude VAT and Delivery and are correct at the time of writing. Specification and price subject to change without notice. All trademarks acknowledged. Appearance may vary from images shown.

Other options

The range is also available with stainless steel exterior (pictured). The lead time is typically 6 – 8 week and the price of the unit and some options are higher. Please contact us for a quote.

We may be able to assist with other bespoke requirements, please contact us for further details.

Whilst most models are normally available from UK stock for fast delivery, options normally take longer, <1 week for most, but up to 2 weeks for some. Please contact us for a quote with current lead-times.



We manufacture enhanced versions of these furnaces meeting AMS 2750F and Nadcap compliant. Complete with calibration, and thermally surveyed before leaving our factory. With thermal uniformity Furnace Class 3, or better, and Instrumentation Types up to 'A'.

We offer higher temperature models, for use up to 1300°C. Our stock SNOL 10/1300 LHM01 includes over-temperature protection and chimney as standard.



Delivery & Shipping

These units are shipped as a palletised wooden crate, on a courier service which is normally next-day for much of the UK.

Destination	Price	Typical Transit Time
UK Mainland (England, Wales, Scottish Lowlands)	£85	1-2 days
UK Scottish Highlands & most UK costal islands	£120	1-3 days
UK Northern Ireland & Republic of Ireland	£120	1-3 days
Other destinations	Please contact us for a quote.	
Collection from our factory	£0 (Weekdays, by arrangement.)	

UK Prices Exclude VAT and Delivery and are correct at the time of writing. Specification and price subject to change without notice. All trademarks acknowledged. Appearance may vary from images shown.

After Sales Service & Warranty

AML Instruments has been stocking and selling the SNOL range since 2008. We hold UK stock of a wide range of spares and accessories and can offer service and repairs at our factory if required at a later date. On-site service and basic repairs may be available subject to location and the nature of the repair. We also offer a range of on-site calibration services, see our website or contact us for more details.

Each unit has a 1 year return to base warranty from the date of purchase from AML Instruments and covers normal use of the unit in accordance with its instruction manual. It does not cover excessive 'wear and tear' to the soft fibre muffle or damage caused by careless use of the spring assisted door.

On receipt of the unit it is important to check for any transport damage and report it to AML Instruments and note it on the carrier's paperwork. It is recommended to keep the original wooden packaging in case the unit ever needs returning.

Under the warranty any manufacturing defects will be rectified by AML Instruments as the agent of the manufacturer at no charge. 'Return to base' means the customer is responsible for return of the unit to AML Instruments's site (Derbyshire, UK) for assessment with a view to repairing under warranty. Or, if necessary, we can provide collection at a cost, provided the unit is suitably packaged. For any work performed that is solely covered by the warranty AML Instruments will provide return shipment of the unit within the UK and Republic of Ireland at no charge. Whilst AML Instruments stocks a range of spares and aims to resolve any warranty repairs quickly, typically within 3 – 8 working days, the warranty does not guarantee this or any provision of a loan unit while the customer's unit is with us.



Part of a range of thermal solutions from AML Instruments

UK Prices Exclude VAT and Delivery and are correct at the time of writing. Specification and price subject to change without notice. All trademarks acknowledged. Appearance may vary from images shown.