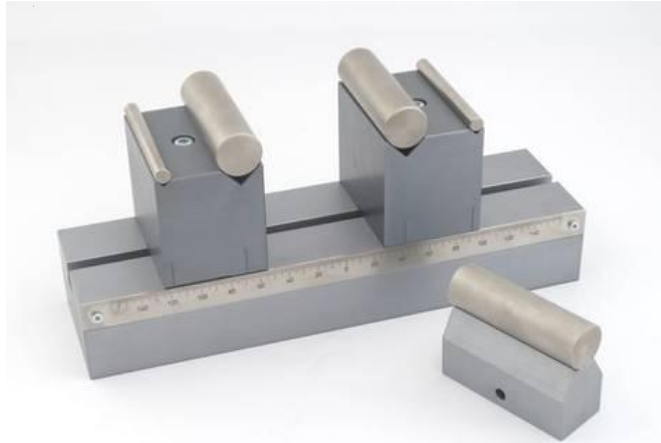


TH22 Biegevorrichtung Bending Fixture

www.grip.de/G02

Grip-Engineering
info@grip.de



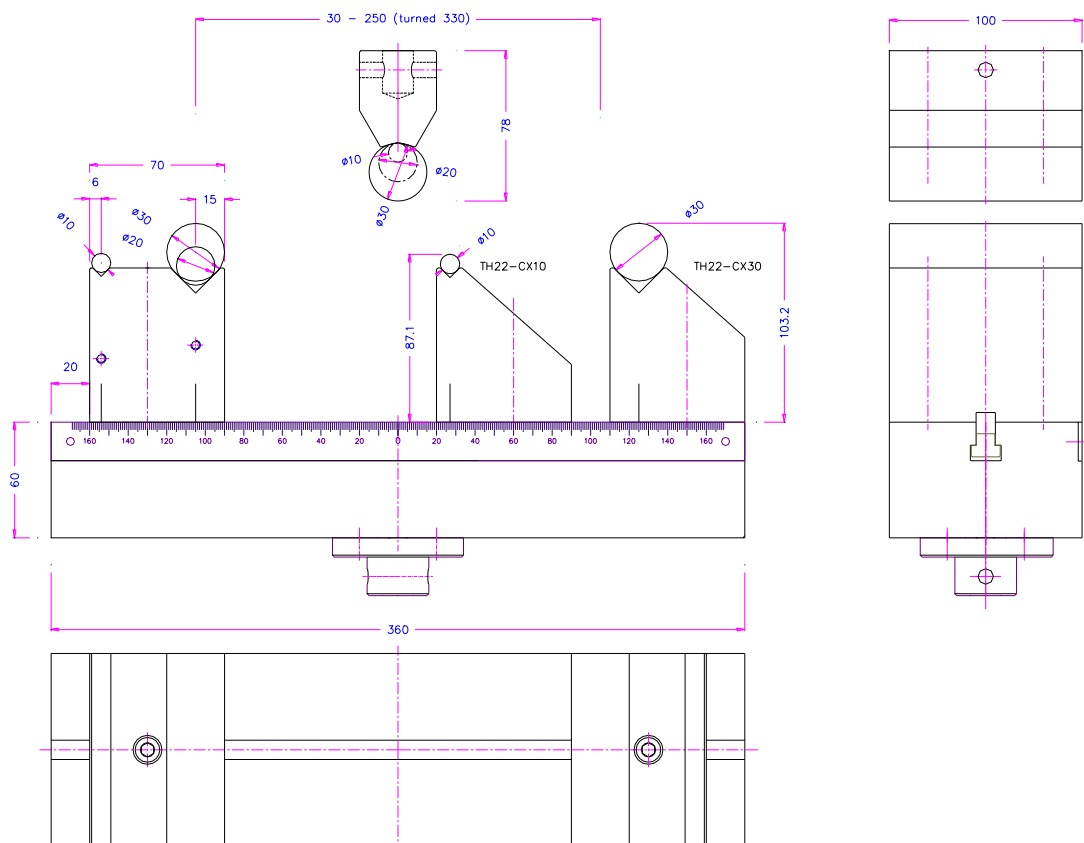
TH22-360-Alu

Flexural Jig for universal use
Specimen supports of 10mm, 20mm and 30mm diameter are supplied as standard

3-Punkt Biegevorrichtung für universelle Verwendung, Walzen 10, 20 und 30mm im Standardlieferumfang

100x360 mm Alu 50kN

<http://www.grip.de/G02/TH22>

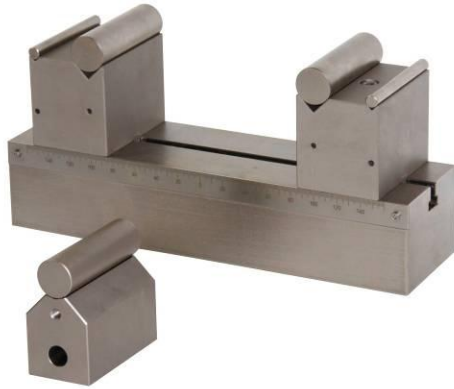


TH22-360-Alu 12kg 50 kN
TH22-360-St 30kg 100 kN

TH22-360

Balkenlängen Lagertypen / Bar length on stock:

Alu 240, 360, 400, 500, 600, 700, 800, 900, 1000, 1100, 1200, 1300mm (50kN)
Steel 240, 360, 500, 600 mm (250kN)



TH22-360-St-Af40

Steel Version 100kN
Adapter female 40mm only upper part
Roller 10,20, 30 mm

Biegevorrichtung 100 kN
Stahl
Auflagerabstand 30-250mm
Walzen 10,20 und 30mm
Adapter 40 (nur oben)
100x360 mm vernickel



TH22-360-St-Af60

Steel Version 250kN
Adapter female 60mm

Biegevorrichtung 250 kN
Stahl
Auflagerabstand 30-250mm
Walzen 10,20 und 30mm

Adapter 60mm
100x360 mm



TH22-St-275-CR2-OR5-5P-Ni

5 point bending fixture
Steel nickel milled Radii
For chamber usage

5 Punkt Biegevorrichtung
Stahl vernickelt
mit gefrästen Radien
Temperaturkammereinsatz

100x275mm



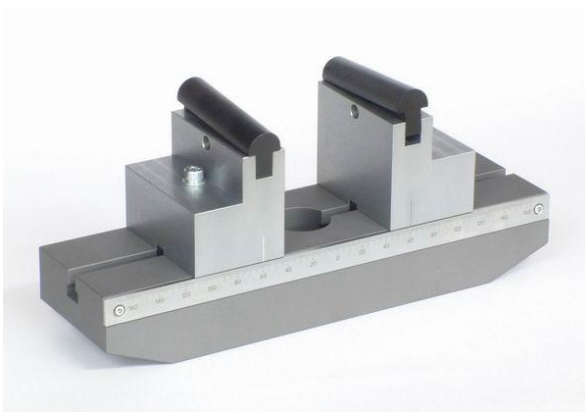
TH22St-500-Af31.8

3-Punkt Biegevorrichtung 100 kN
Walzen Ø: 10, 20, 30 mm
Adapter 31.8/12.7 (10/8")
Biegebalken 500mm aus Stahl.



TH22-600+D30x160

3-Punkt Biegevorrichtung 50 kN
inklusive Walzen Ø: 160mm breit
10, 20, 30 mm
Biegebalken 600 mm aus Aluminium



TH22-360-CWR15 Alu



TH22St-360-CWX30 Steel

Movable 100kN
Roller 30x100mm
exchangeable

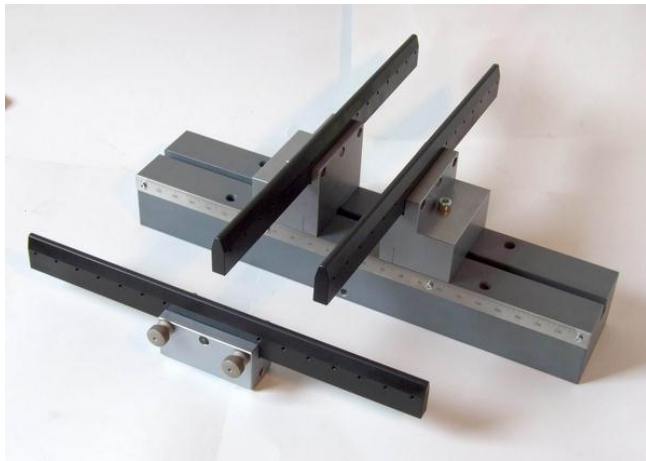
Bewegliche Wippen
Rolle 30x100mm
austauschbar



TH22-800-CXOD15x350-CXUD15x350

lower diameter 15mm width 350
upper diameter 30mm width 350

mit Sonderrollen 15x350 unten
und 30x350mm oben



TH22-500-CWR5x420-Alu

Radius 5mm width 420mm



TH22-900-CND30-OWR20XSA30 Alu

rollers moveable 20x100mm
Upper part articulation support

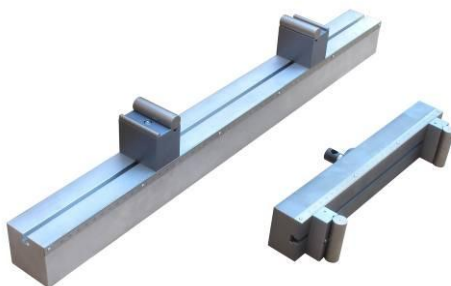
mit frei beweglichen Rollen
20x100mm auf einem Bock mit
Anschlag.
Oberteil mit Wippe



TH22-1000-4P-CXH200 Alu

4 point bending jig
special Height of 200mm of support

4-Punkt Biegevorrichtung 50 kN
Walzen Ø: 10, 20, 30 mm
Untere Bockhöhe 200mm
1000 mm Balkenlänge Alu



TH22-1200-4P-Am30 Alu

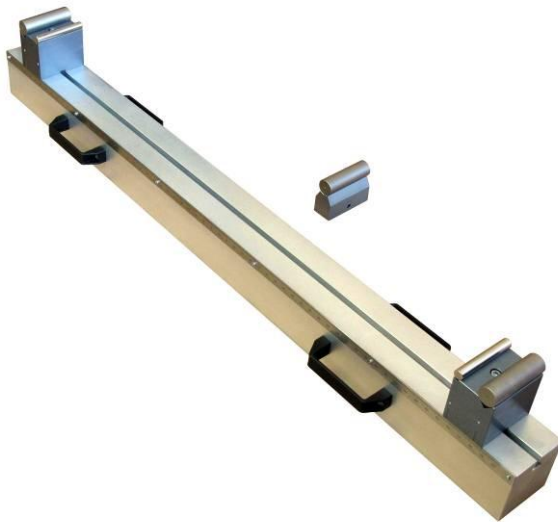
4-Punkt Biegevorrichtung 50 kN
Walzen 10,20 und 30mm
Balkenlänge 1200 mm
Aluminium



TH22-1200-CWLD20x400-Af36 Alu

Rollers are articulating in 2 axis
Are nested on half cutted bearings
for free rotation

4-Punkt Biegevorrichtung 50 kN
2 axige Rotationsmöglichkeit
Mit in Nadellagerhalbschalen gelagerte
Walzen 20mm Durchmesser 400mm breit
Balkenlänge 1200 mm
Aluminium



TH22-1310 Alu

Long bending jig 100x1310mm
with holder

Große Biegevorrichtung
100x1310mm Griffe

Rollen 10,20,30



TH22St-1310

Heavy Steel Version

3-Punkt Biegevorrichtung 150 kN
Walzen Ø: 10, 20, 30 mm
100x1310 mm Stahl








TH22St-500-B350-D40-AroB-Ni

Heavy Bending Jig
Basis platen 500x350mm
Roller 40mm with
Anti roll over Bar
Side Bars to avoid a roll over

Schwere Biegevorrichtung für
Faltversuche mit Seitenleisten
350mm breit
Vernickelt

See also THS260 folding jigs

Zubehör Accessories	Supports
	<p>TH22-CR2-Ni</p> <p>Einfaches Auflager Radius R2 Stahl gehärtet vernickelt</p> <p>Support with milled Radius R2 Steel hardened nickel ,R2,R3 R5</p>
	<p>TH22-OCR5-Ni</p> <p>Einfaches oberes Auflager für 4-Punkt niedrige Höhe gefräst gehärtet vernickelt Radius R5</p> <p>Support with milled Radius R5 for upper Bar in a 4 Bending jig Steel hardened nickel</p>
	<p>TH22-AX Alu or Steel</p> <p>Support for eXchangable Rollers 8 to 35 mm Ø for lower bar</p> <p>Auflagerbock für tauschbare Rollen 8 to 35 mm Ø für unteren Biegebalken</p>
	<p>TH22-D30</p> <p>Roller for supports type X hardened nickel</p> <p>Rolle 30x100 mm gehärtet vernickelt für Auflager vom Typ X</p> <p>Ø 8,9,11,12,13 . 50 1 Set = 3 Rollen</p>
	<p>TH22-AX-Alu</p> <p>Support with Roller 10,20,30 Ø for lower Bar</p> <p>Auflager für tauschbare Rollen für unteren Biegebalken mit Walzen 10, 20 und 30mm</p>

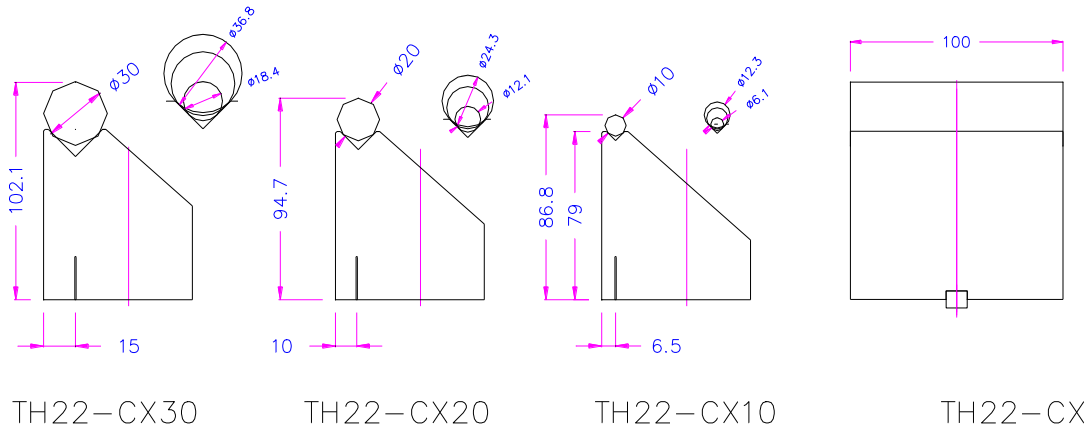


TH22-CX30

CX supports for exchangeable rollers

TH22-CX

Support for one exchangeable roller
CX30 allows to fix roller from D18 to D36 mm



TH22-CX10-H150

Special Height 150mm Roller 10mm

Auflager C Sonderhöhe 150mm
Walze 10mm



TH22-CXD50

Auflagerbock mit Rolle 50mm

Support with Roller diameter 50mm



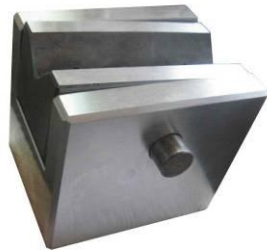
TH22-CXD30-H200

Auflager Sonderhöhe 200mm
mit Walze 30mm

support Height 200mm

CW Supports for articulating Roller

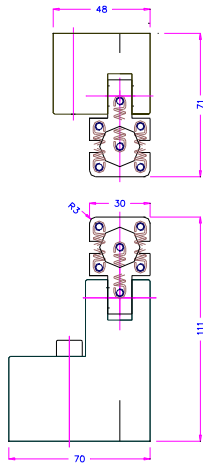
CW articualting	
	<p>TH22-CW</p> <p>Support for articulating inserts Fixable 50kN Alu</p> <p>Auflagerbock für Wippen Alu Max 50kN</p>
	<p>TH22-OW-Af159</p> <p>Upper part articulating carrier</p> <p>Finnenträger mit Wippfunktion Adapter 15.9mm</p>
	<p>TH22-WFR5</p> <p>Insert Radius 5mm</p> <p>Einsatzfinne Radius R5x100mm (on stock R2, 5,10,15, 20)</p>
	<p>TH22-OW+WFR5 mounted</p> <p>Finnenträger mit Wippfunktion Adapter 15.9mm mit Finne R5</p>
	<p>TH22-CWR5x420</p> <p>Wippfunktion Radius R5mm Breite 420</p>
	<p>TH22-CWL20x400</p> <p>Wippfunktion Nadelgelagert rollbar Durchmesser 20 Breite 400</p>



TH22St-CWX
 Auflagerbock 100kN Stahl
 Stahl kippar für tauschbare Rollen

movable support steel 100kN
 for exchangeable roller

<http://www.youtube.com/watch?v=zkmw0ohWTU>



TH22-WNJD30xR3

Moveable articulating






Auflager mit Federn gehalten






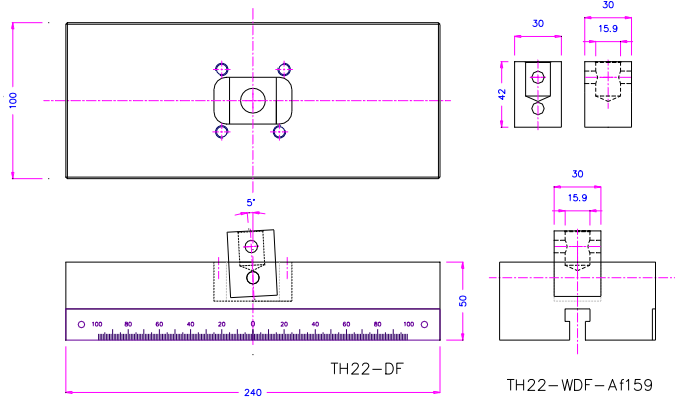
TH22-WNJD30xR3-G

Rubber coated
 Moveable Y,Z

In 2 Achsen beweglich
 Auflagerpfanne
 Gummiert
 30x100mm Kante R3

N Roller	
	<p>TH22-CND30 Rolle liegt am Anschlag frei</p> <p>Roller fixed with rubber ring</p>
	<p>TH22-CLD50</p> <p>Support with Roller 50mm diameter Width 50mm</p>
O top parts	
	<p>TH22-OR5-Af159-Ni</p> <p>Einzelne obere Finne R5 Adapter 15.9 gefräst</p> <p>single upper fin hardened Adapter female15.9</p> <p>58 HRC Nickel</p>
	<p>TH22-OR25-Af36</p> <p>upper fin hardened Radius 25 Adapter 36</p> <p>58 HRC</p>
	<p>TH22-OX-Af32</p> <p>Finnenträger oben mit Adapter 31,8, 32, 36,40,50,60</p>

	<p>TH22-OX-Af159 Finnenträger oben mit Adapter 15.9/8, Adaptergrößen aus Alu: 15.9 und 20 aus Stahl 30/12, 31.8/12.8, 32/16, 36/18, 40/16, 50, 60.</p> <p>exchangeable carrier</p> <p>http://www.grip.de/g02/TH22-2/TH22-OT/</p>
	<p>Zubehör für 4 Punkt Biegung</p>
	<p><u>TH22-240-DF</u></p> <p>Oberteil für TH22 macht aus einer 3-Punktebiegevorrichtung eine 4-Punktbiegevorrichtung</p> <p>http://www.grip.de/G02/TH22-2/TH22-DF http://www.grip.de/G02/TH22-2/TH22-OT http://www.grip.de/G02/TH22-2/TH22-Fi/</p> <p>allows a 4 point fixture</p>
	<p>TH22-OAX Oberer Träger für tauschbare Rollen für 4 Punkt Biegevorrichtung</p> <p>upper carrier for Roller 4Point bending</p>
	<p>TH22-OM30 Doppelfinnenträger mit harter Platte und Walze 30x100 für Glasprüfung</p>
	<p>TH22-OCW Oberer Träger für Wippe</p>



TH22-WDF
Wippe Adapter





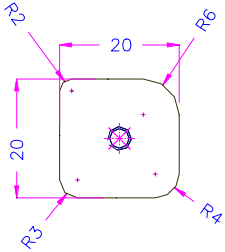


TH22-DF-WR20-WDF
DF Doppel Finne
WR20 wippe mit Radius 20
WDF Wippe Doppel Finne

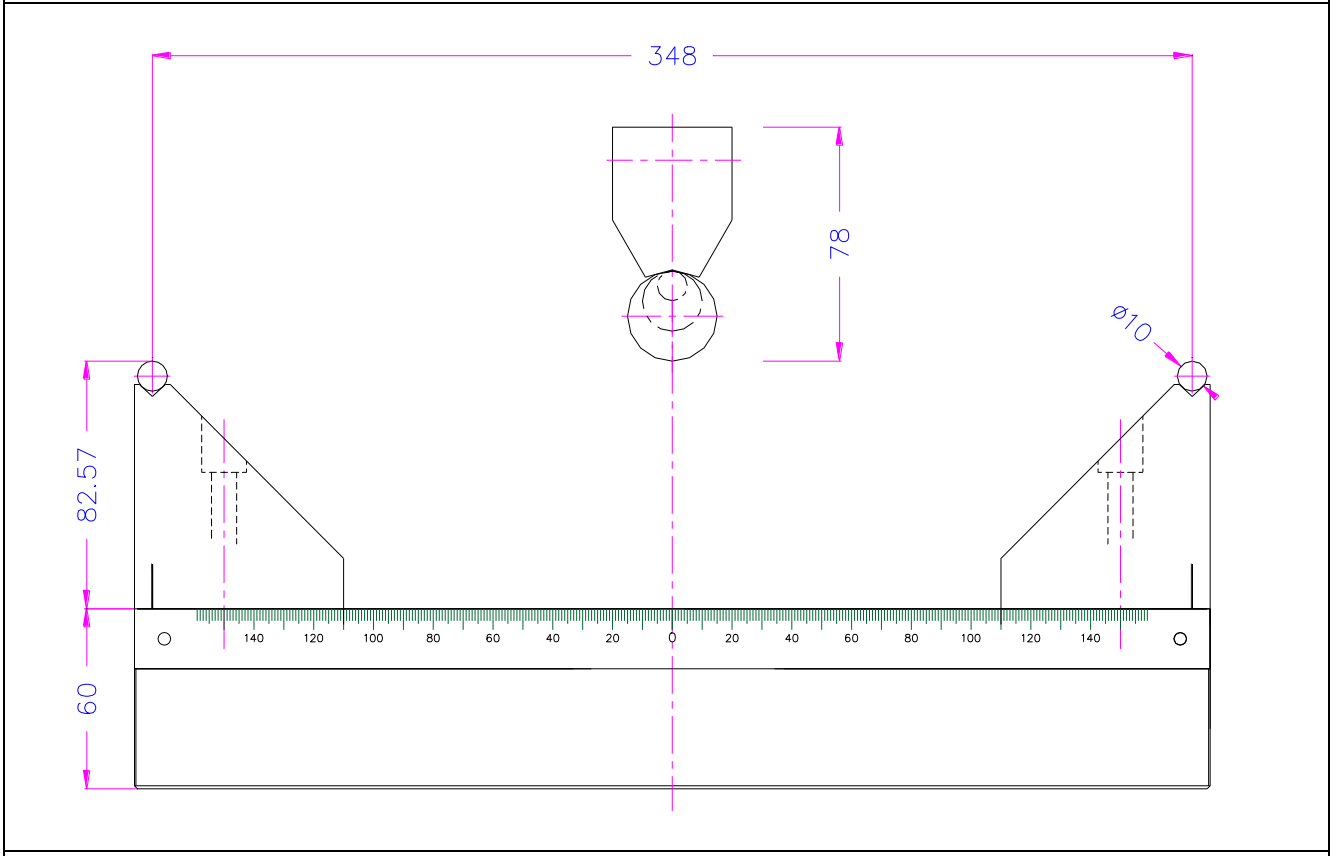
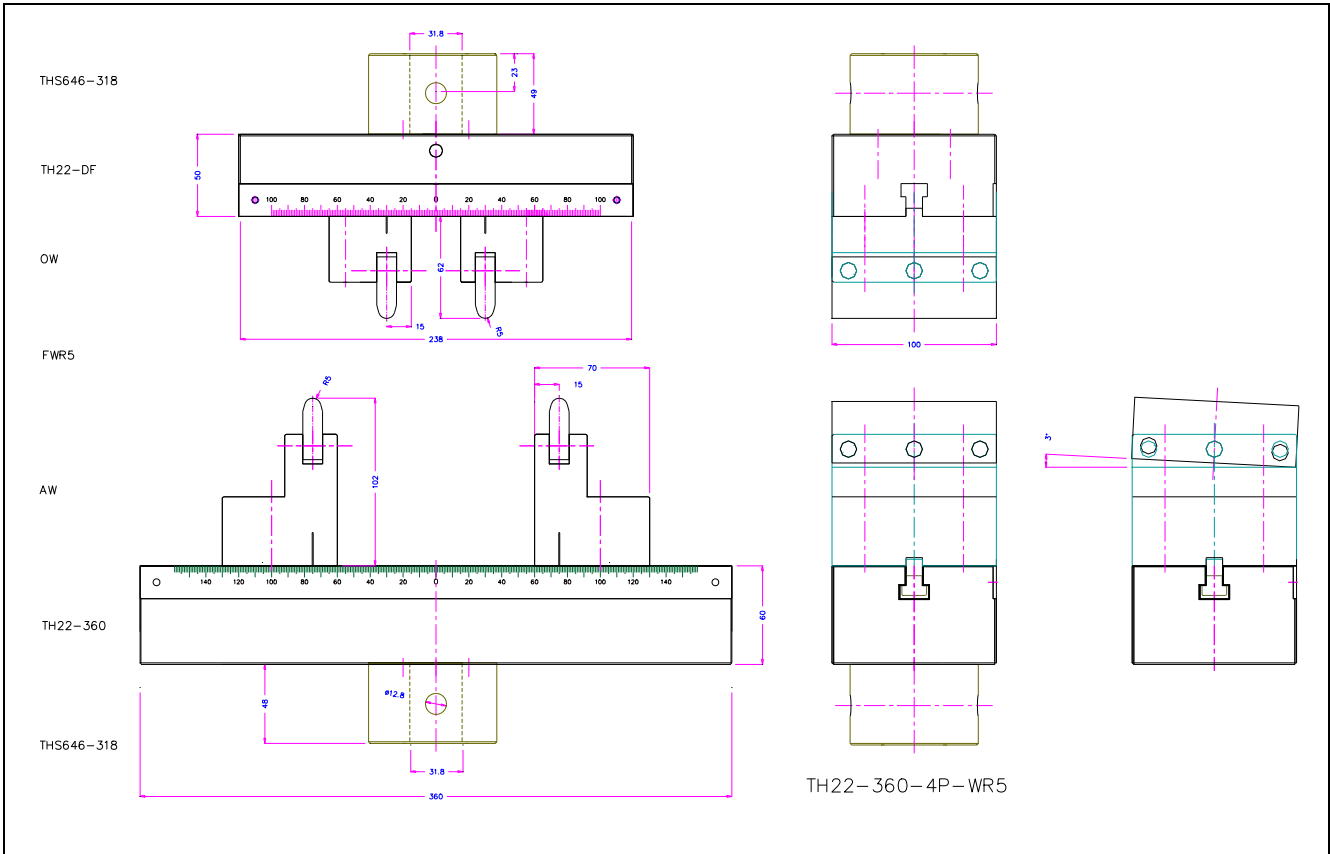
Moving support + moving adapter
Wippe



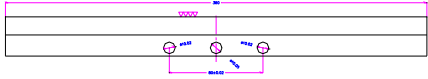
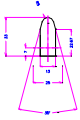
TH22-DF-WR20

Articulation blocked

spezielles Zubehör	special Accessoires
	<p>TH22-FD10+FB Für Oberteile mit sehr großen Adaptern For holder with big adapter Size</p>
	<p>TH22-FRX Sonderauflager Eckig 90 und 120° Segmente mit angefrästen für extreme Radien z.B. Radius 0.5,1,2,3,4,5,6,7 .. ,50..100 for special small or special big Radius in X supports http://www.grip.de/g02/TH22-2/TH22-Fi/</p>
	<p>TH22-CX30-CFR-2-3-4-6 special Fin with 4 Radii für carrier of type CX30 and AX30 Sonderfinne mit 4 Radien R2 R3 R4 R6 für Auflager vom Typ CX und AX</p>
	<p>TH22-CX-V1 Segmentreduktion für kleine Walzen Insert for small diameters in V</p>
	<p>TH22-TNS10 T-Nutenstein 10mm breit 40mm lang TH22 Alu Version oder TH36T</p>

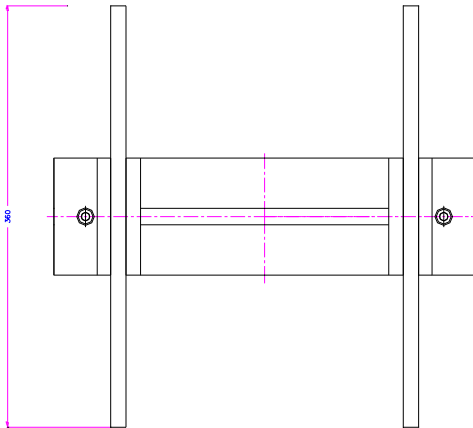
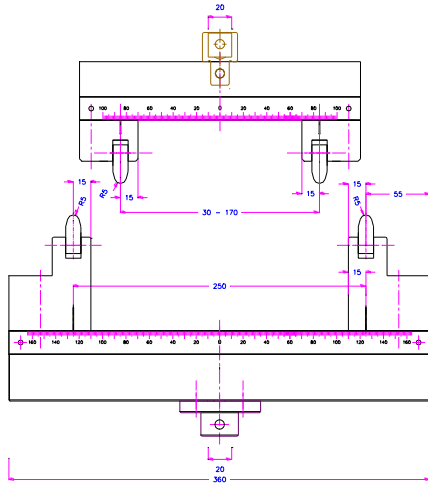
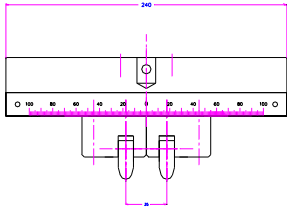
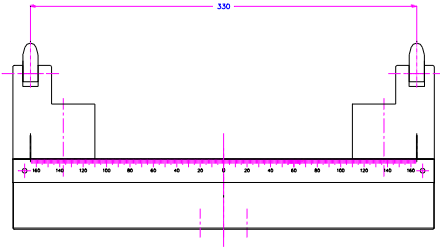


TH22-360-CX10

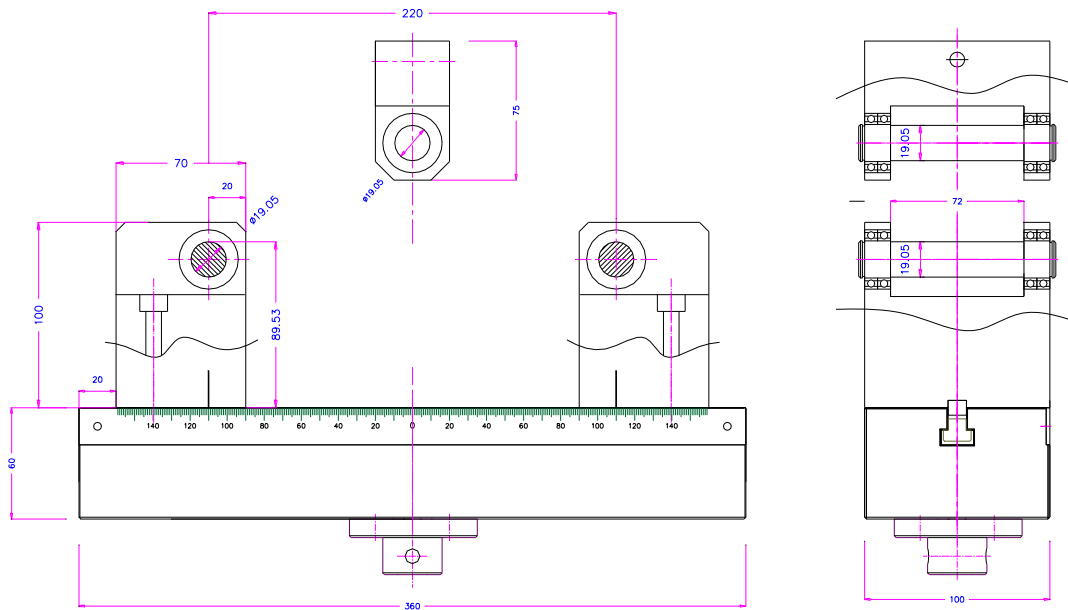


neu 10.7.07

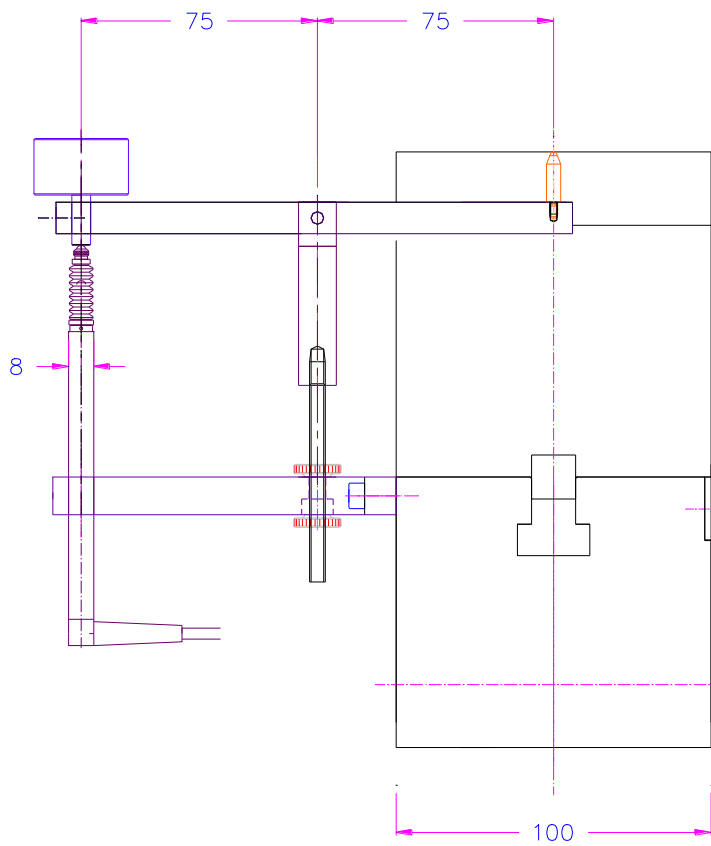
TH22-SAR5 Finne 1.2842



TH22-360+DF-AI-SAR5x360-Af20



TH22-360-SRo1905 23-6-08



TH22-1TH

for extensometer für induktiven Weggeber

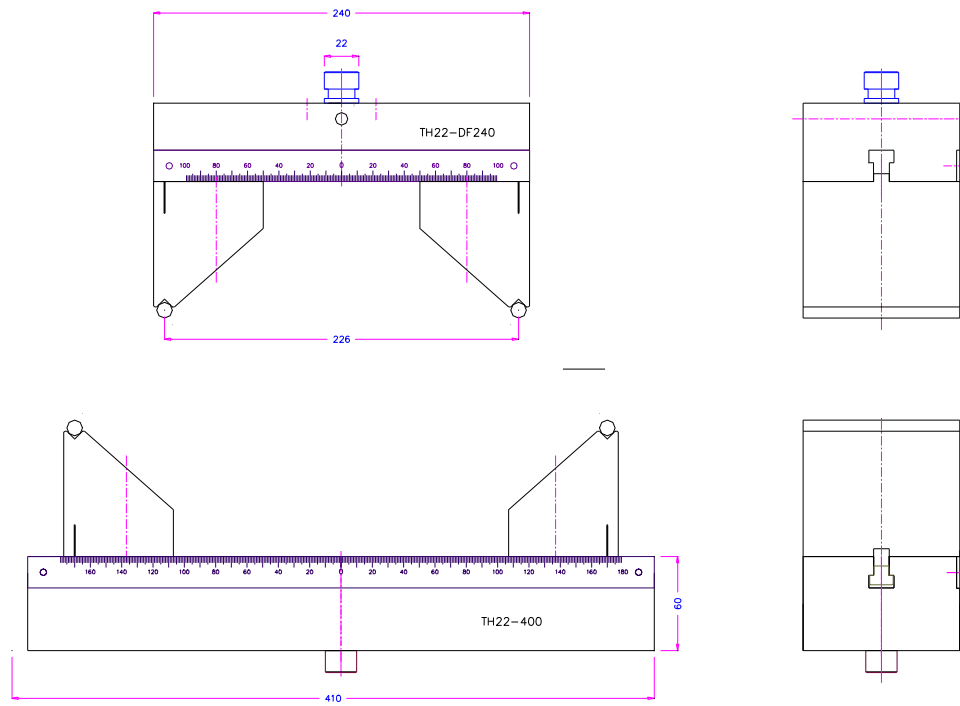
See also

www.grip.de/G02

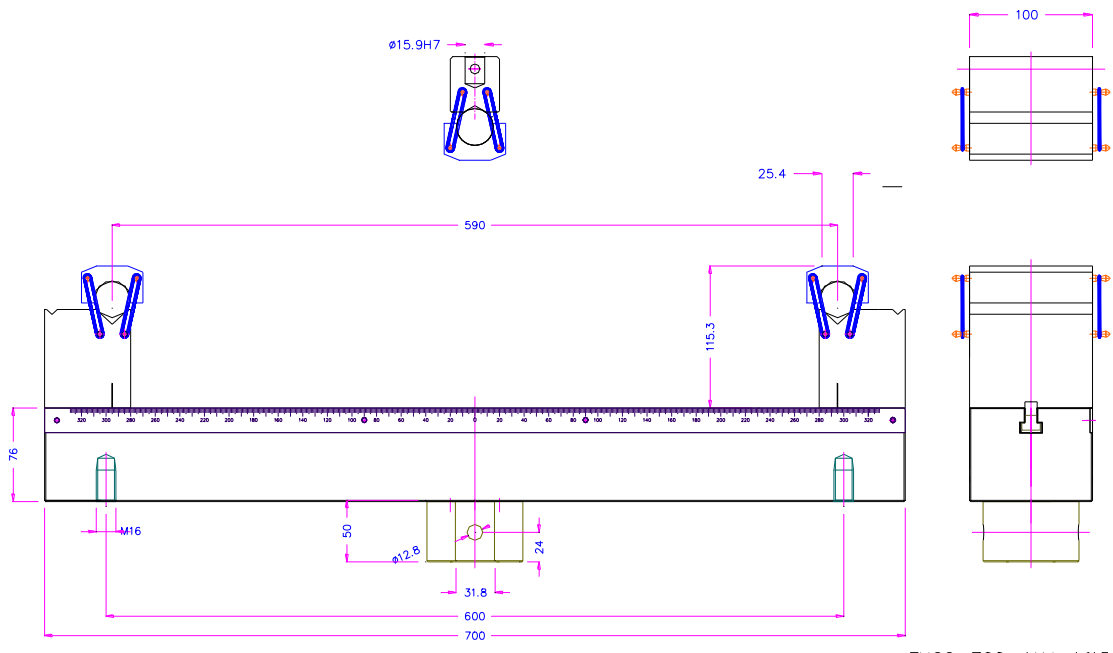
www.grip.de/G02/TH238

www.grip.de/G02/TH103

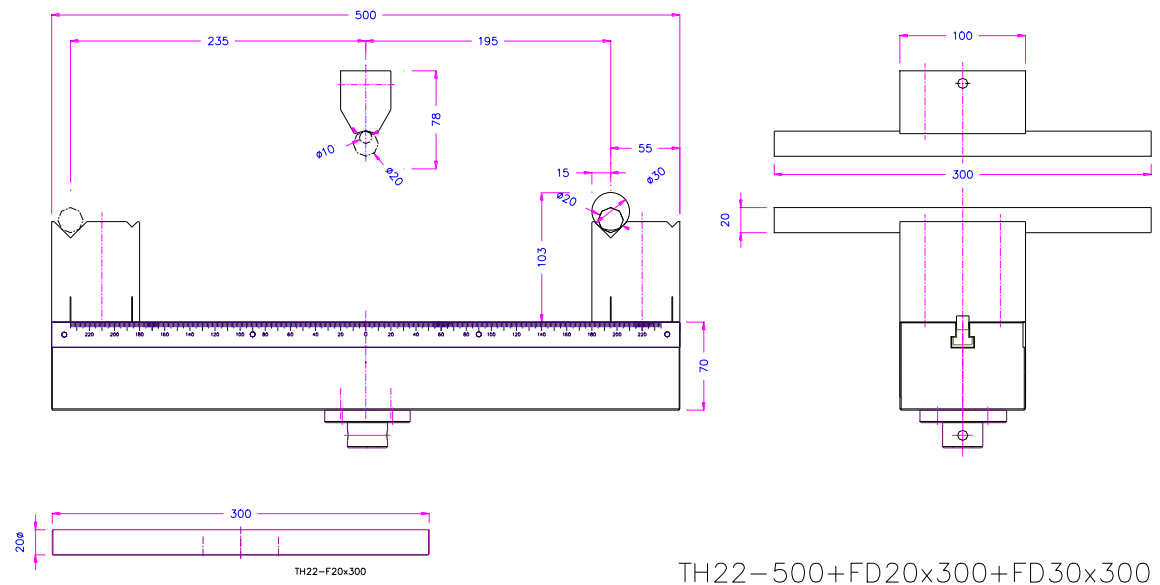
www.grip.de/G02/TH260



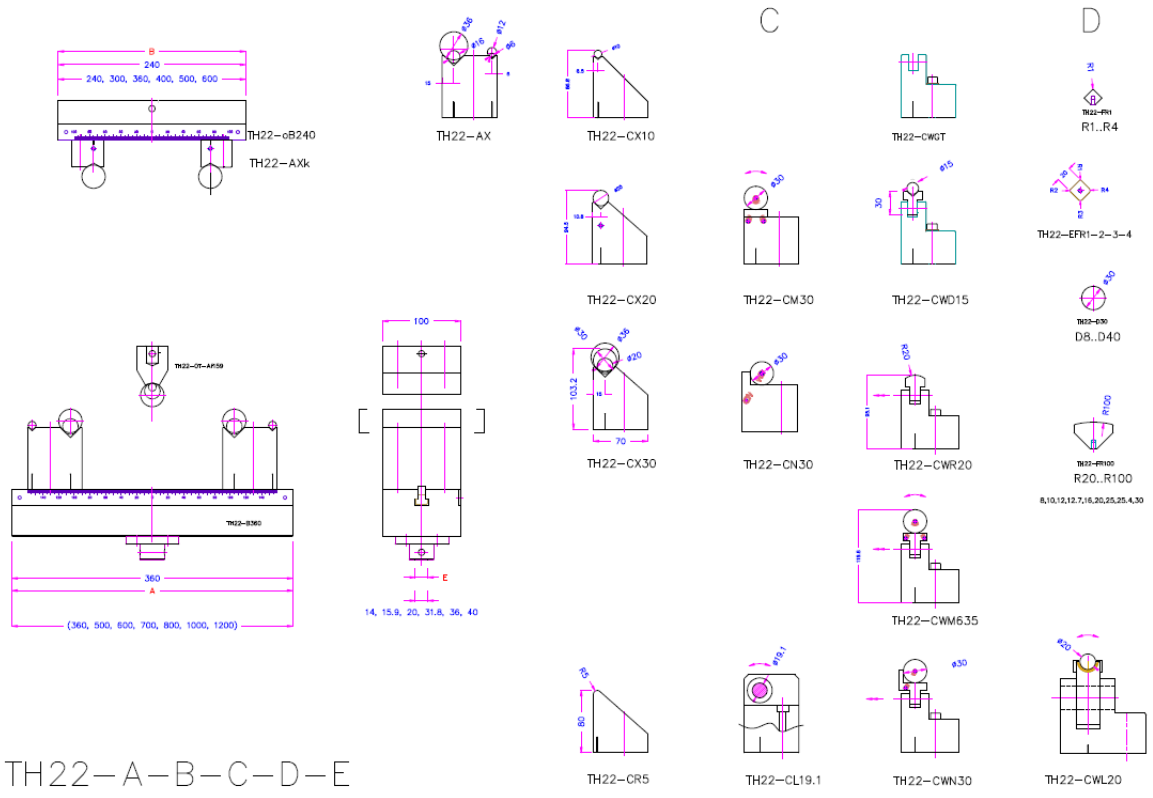
TH22-400-240-C10-Am22



TH22-700-AXJ-Af159



TH22-500+FD20x300+FD30x300



MT14.1.2019