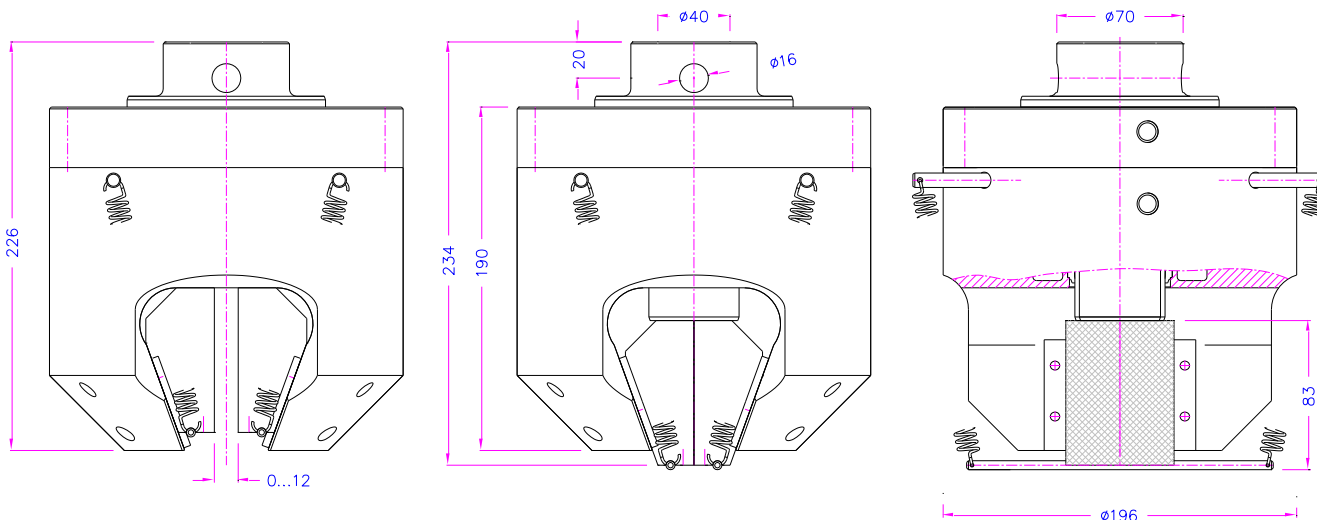
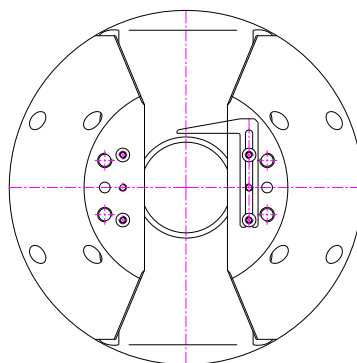


HYDRAULIC NON-SHIFT WEDGE GRIP

The jaws stay in place vertically when clamping the sample.
 The grip body is moving up and down when closing and opening the jaws.
 Perfect for sensitive materials to avoid extra pressure on the specimen.
 Available as 100 kN and 250 kN versions.

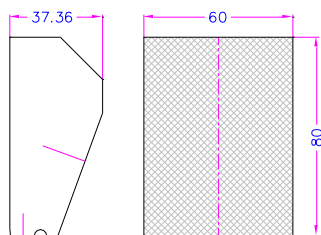
Item no.:	THS1287-100-spr
Max. tensile force:	100 kN
Max. clamping force:	200 kN at 315 bar
Jaw opening:	Depends on jaw type, see page 2
Coupling:	Af40. Further couplings on request
Material:	Steel, nickel-plated
Temperature range:	0 ... +70°C Further temperature ranges on request
Weight:	62.3 kg per pair of grips without jaws
Scope of delivery:	1 pair of grips



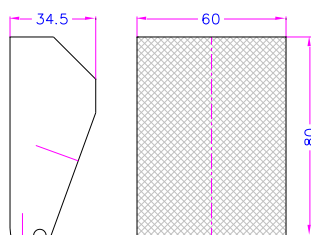
Jaws for THS1287-100-spr:

Scope of delivery: 1 set = 4 jaws

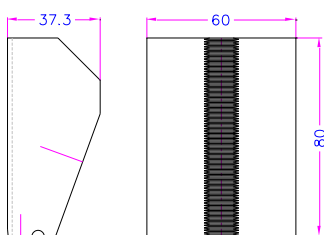
Item no.:	Surface:	Clamping surface HxW:	Opening:	Weight per pair:
THS1287-100-BP12	Pyramid (serrated)	80x60 mm	0-12 mm	2.2 kg
THS1287-100-BP22	Pyramid (serrated)	80x60 mm	12-22 mm	1.8 kg
THS1287-100-BV12	V-jaws	Height 80 mm	4-12 mm Ø	2.2 kg
THS1287-100-BV20	V-jaws	Height 80 mm	12-20 mm Ø	1.8 kg



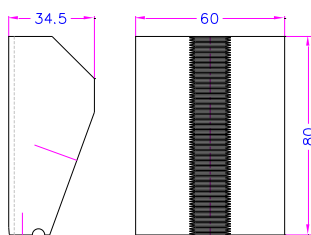
1 set (4x) THS1287-100-BP10 0-10 mm



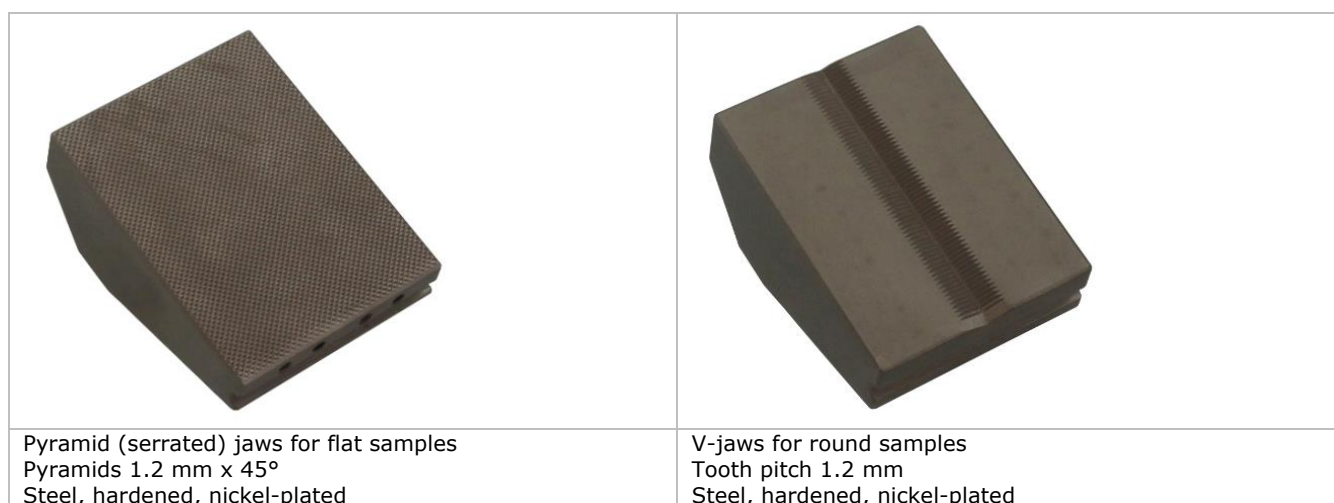
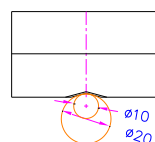
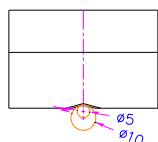
1 set (4x) THS1287-100-BP20 0-20 mm



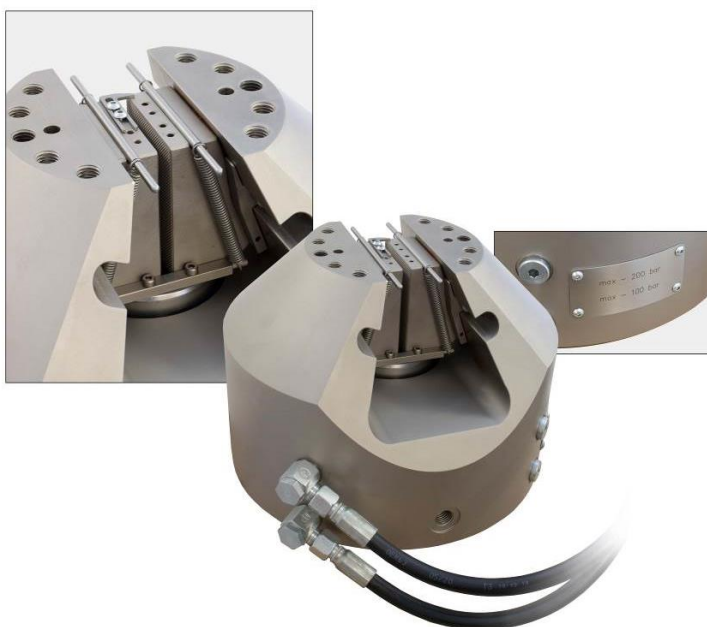
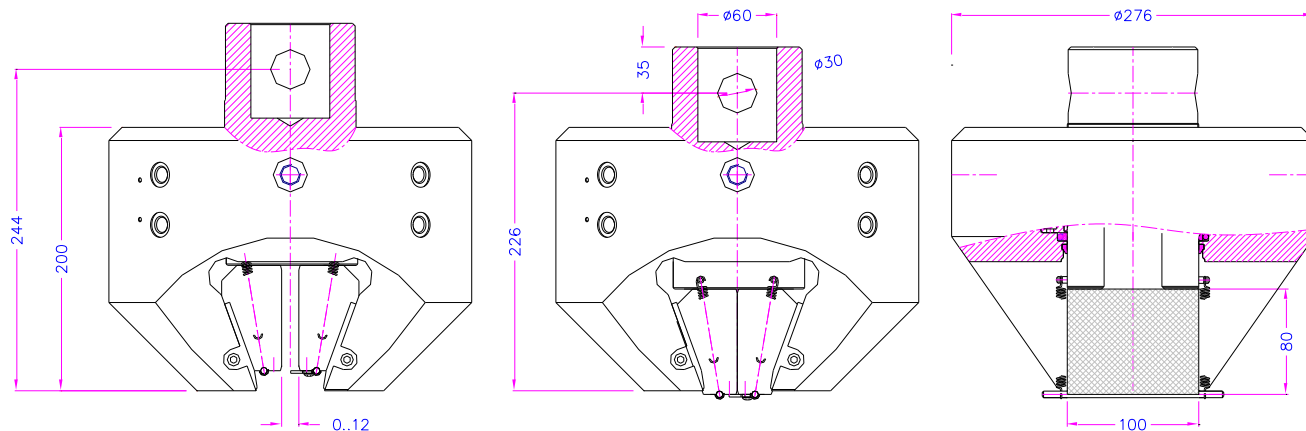
1 set (4x) THS1287-100-BV10 Ø5-10 mm



1 set (4x) THS1287-100-BV20 Ø10-20 mm



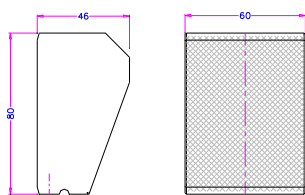
Item no.:	THS1287-250
Max. tensile force:	250 kN
Max. clamping force:	550 kN at 200 bar
Jaw opening:	Depends on jaw type, see page 4
Coupling:	Af60. Further couplings on request
Material:	Steel, nickel-plated
Temperature range:	0 ... +70°C Further temperature ranges on request
Weight:	124 kg per pair of grips without jaws
Scope of delivery:	1 pair of grips



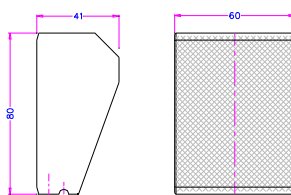
Jaws for THS1287-250:

Scope of delivery: 1 set = 4 jaws

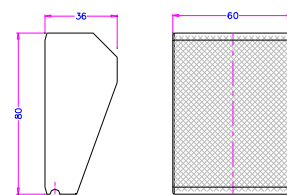
Item no.:	Surface:	Clamping surface HxW:	Opening:	Weight per pair:
THS1287-250-BP12	Pyramid (serrated)	80x60 mm	0-12 mm	2.8 kg
THS1287-250-BP22	Pyramid (serrated)	80x60 mm	10-22 mm	2.4 kg
THS1287-250-BP32	Pyramid (serrated)	80x60 mm	20-32 mm	2.0 kg
THS1287-250-BP42	Pyramid (serrated)	80x60 mm	30-42 mm	1.6 kg
THS1287-250-BV12	V-jaws	Height 80 mm	4-12 mm Ø	2.8 kg
THS1287-250-BV21	V-jaws	Height 80 mm	12-21 mm Ø	2.4 kg
THS1287-250-BV31	V-jaws	Height 80 mm	22-31 mm Ø	2.0 kg



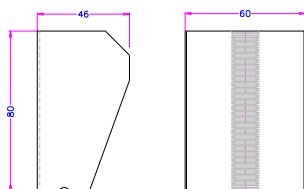
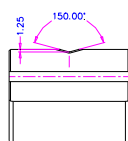
1 set (4x) THS1287-250-BP12 0-12



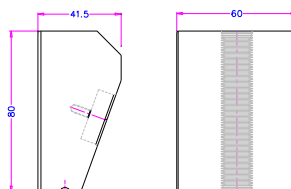
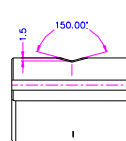
1 set (4x) THS1287-250-BP22 10-22



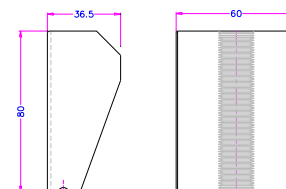
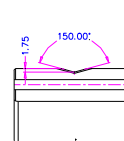
1 set (4x) THS1287-250-BP32 20-32



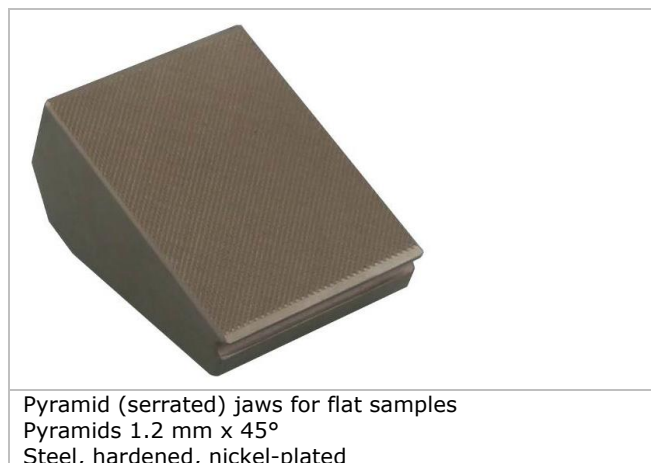
1 set (4x) THS1287-250-BV12 ø5-12



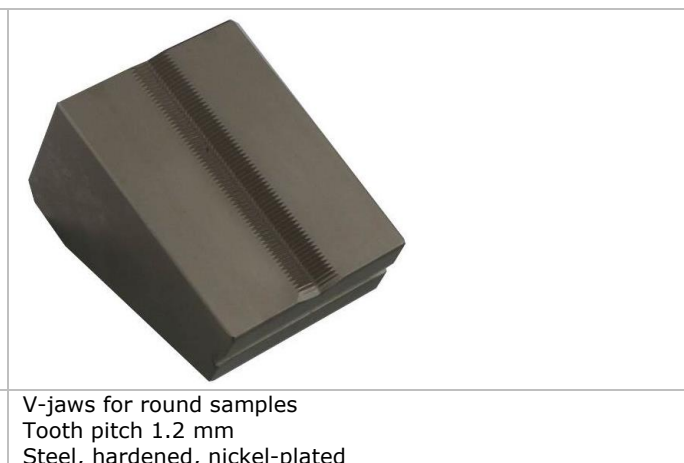
1 set (4x) THS1287-250-BV21 ø12-21



1 set (4x) THS1287-250-BV31 ø22-31



Pyramid (serrated) jaws for flat samples
Pyramids 1.2 mm x 45°
Steel, hardened, nickel-plated



V-jaws for round samples
Tooth pitch 1.2 mm
Steel, hardened, nickel-plated

Special version

Item no.:	THS1287-300
Max. tensile force:	300 kN
Max. clamping force:	600 kN at 220 bar
Max. jaw opening:	0-32 mm (depends on jaw type)
Coupling:	Am70. Further couplings on request
Material:	Steel, nickel-plated
Temperature range:	0 ... +70°C Further temperature ranges on request
Weight:	150 kg per pair of grips without jaws
Scope of delivery:	1 pair of grips



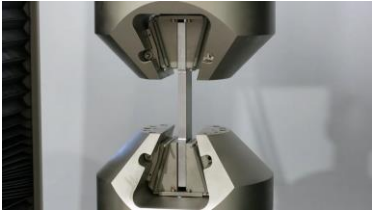
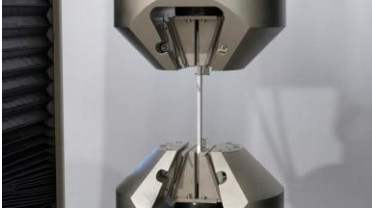
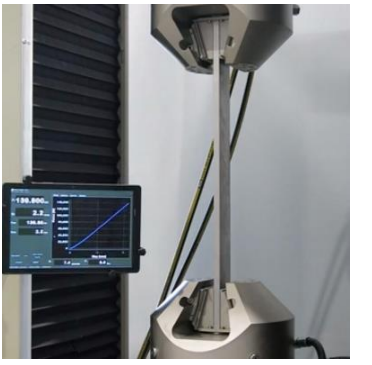




Hydraulic pump and hose for THS1287 grip:

<p>Item no.: TH135-Pu-V2-o2-450-spr Air hydraulic pump for spring return hydraulic grips:</p> <ul style="list-style-type: none"> • 2 valves for independent switching of the grips (open – close) • Remote control with ON / OFF switches • Capacity: 2.75 l/min, 40 - 450 bar • 1:61 (air pressure: oil pressure) • Dimensions (LxWxH): 350 x 250 x 400 mm <p>Weight 27.5 kg; 220 V, 0.1 A. Noise level 60 dBA</p>	
<p>Item no.: TH135-Pu-V4-o2-450-G-a-spr</p> <p>Same as TH135-Pu-V2-o2-G-a-450-spr but</p> <ul style="list-style-type: none"> • with 4 hydraulic valves to lock the jaws at any required position (close – stop – open) 	
<p>Item no.: THS1881-6.3-3-SW19 Hydraulic hose, 3 m long, 6.3 mm inner diameter, 1/4" fittings, 450 bar, 125°C, union nuts: M16x1.5, wrench size 19 mm</p> <p>Item no.: THS1881-6.3-5-SW19 Same as above, but 5 m long</p>	

Example for special version:

<p>THS1287-250 + THS223w-196</p> <p>THS1287 grip with a heavy self-aligning spherically seated steel compression platen, 196 mm Ø Swiveling angle $\pm 1.5^\circ$</p>	
---	--

Videos:

	<p>THS1287-250 Aluminium dog bone-shaped specimen, 12x55 mm, 215 kN https://www.youtube.com/watch?v=bGImBGQVp6U</p>
	<p>THS1287-250 Aluminium dog bone-shaped specimen, 6x20 mm, 36 kN https://www.youtube.com/watch?v=X5Hq5tiazR8</p>
	<p>THS1287-250 withstands 250 kN https://www.youtube.com/watch?v=t-Oxc2Kr3fg</p>
	<p>THS1287-250 how to fix jaws in upper body https://www.youtube.com/watch?v=YUdedHJTBS8</p>
	<p>THS1287-250 how to fix jaw with spring https://www.youtube.com/watch?v=3Ql3qow2eq</p>
	<p>THS1287-100 how to change jaws https://www.youtube.com/watch?v=ZhqFJov_bf8</p>
	<p>THS1287-300 - changing the jaws - opening - closing https://www.youtube.com/watch?v=L1Ce_e6qjJ4</p>

See also:**Pneumatic non-shift wedge grip****THS1302-10-NOSH**

Max. tensile force: 10 kN

Max. clamping force: 20 kN at 7 bar

Temperature range: -70...+280°C

 [THS1302_Datasheet.pdf](#)